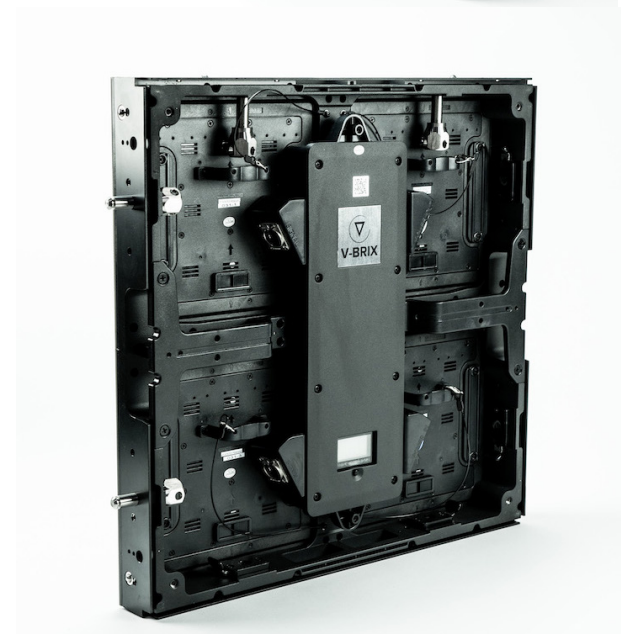
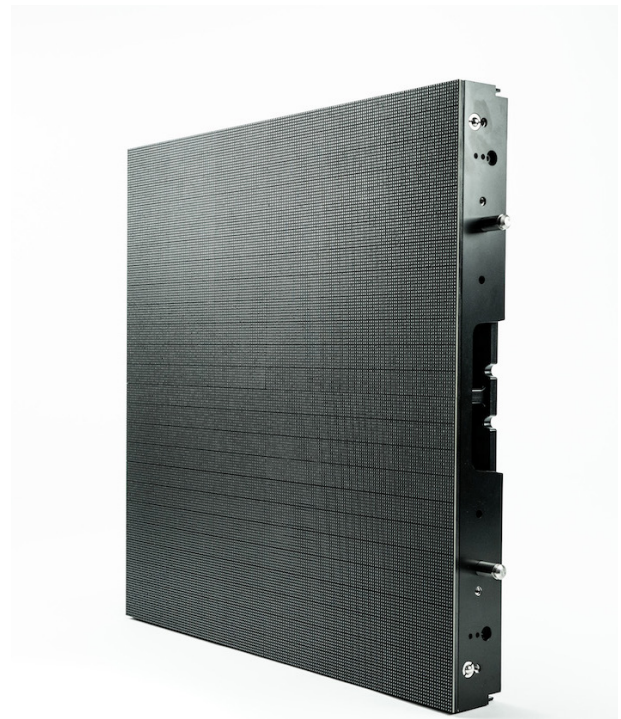




# V-BRIX 2.5mm LED TILE

## TECHNICAL SPECIFICATIONS

<b>LEDs</b>	Pixel Pitch	2.5 mm
<b>Cabinet</b>	LED Panel Resolution	192 x 192 (pixels)
	Tile Dimensions	W: 496mm / 19.5in H: 496mm / 19.5in D: 55mm / 2.16in
	LED Cabinet Area	0.24 sqm
	Transparency Ratio	0%
	Brightness	1,200 nits
	Viewing Angle	Horizontal: 140° Vertical: 140°
	<b>Power Supply</b>	Power Consumption (max.)
	Input Voltage	AC 110-240V 50Hz/60 Hz
	LED Panel Weight	16.53 lbs.
<b>Mechanical Design</b>	Material	Black Coated Aluminum
	Ingress Protection	IP20
	Serviceability	Rear Access
<b>Misc.</b>	Certifications	CCC, CE, EMC, ETL, FCC, TUV-EMC, UL
<b>Processing</b>	Processing Depth	16 bits
	Display Refresh Rate	< 3840 Hz
	Processing Type	Novastar



*\*V-BRIX LED Tiles are compatible with beMatrix and Aluvision framing systems.*

**HEADQUARTERS**  
30 Wright Ave.  
Lititz, PA 17543  
T: 717.740.2400

[www.choice.live](http://www.choice.live)